

Mounting instruction Glueing Spoiler

Maart 2019

DOC V0045

Version 00

Veap Shield United, Einsteinstraat 1, 6669 NC Dodewaard, +31 (0)488-482554 veap.nl

Preparation Spoiler (Blue surfaces)

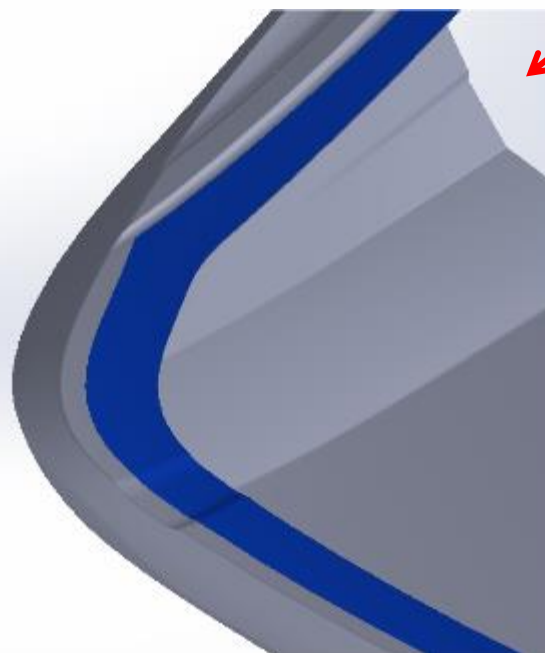
Polyester gelcoat side
roughening



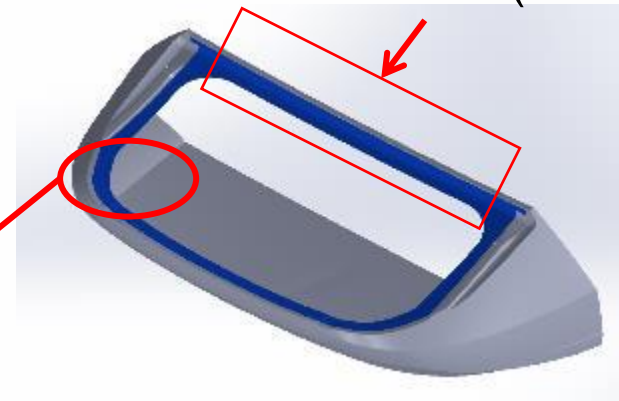
Sika® Aktivator 100



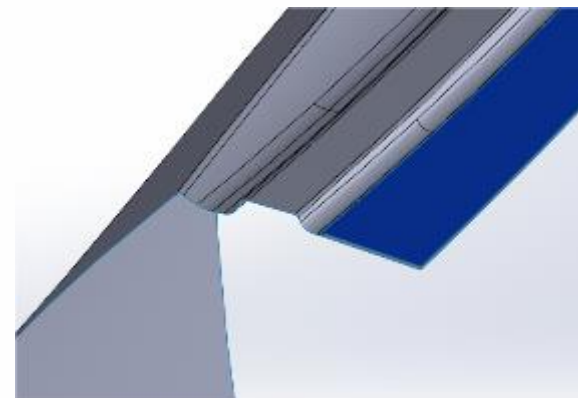
Sika® Primer-206 G+P
(black)



Connection surface(if available)

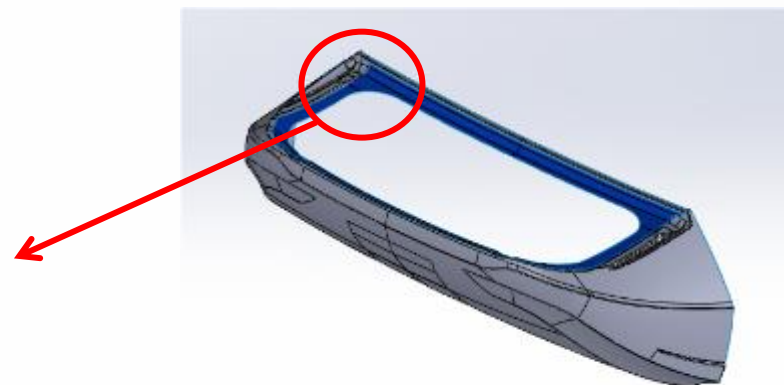
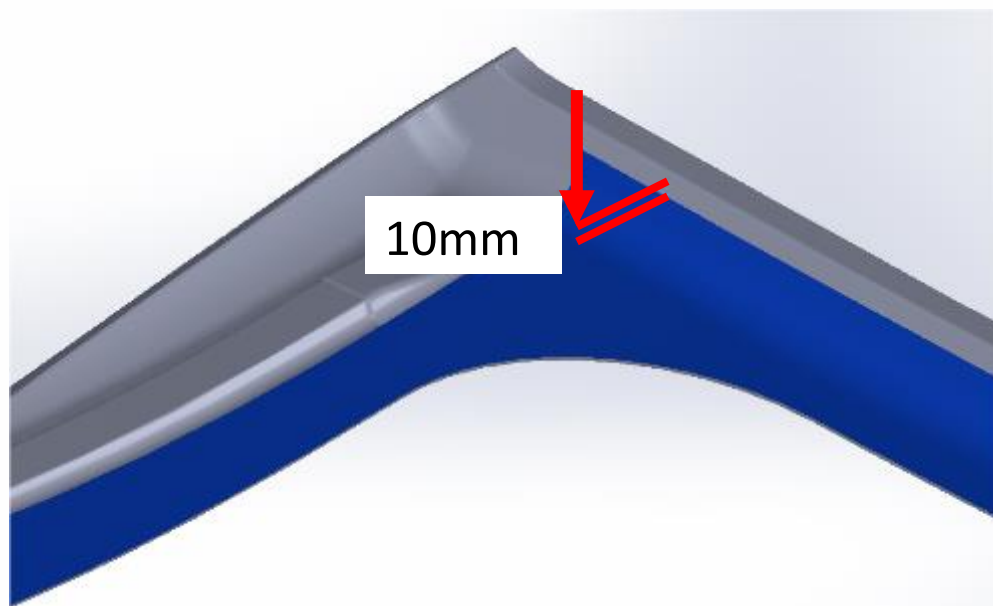


Cross section side edge

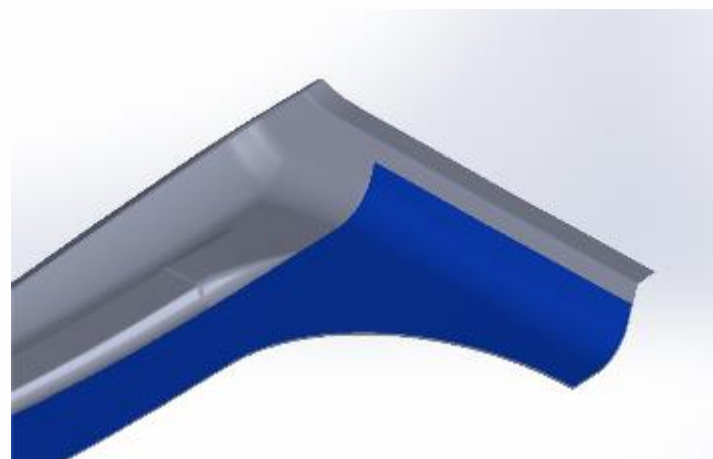


Be for use of these products,
check safety data sheets!!!!

Dimensions Back edge Spoiler (if connection surface available)



Cross section back edge



Preparing roof Vehicle

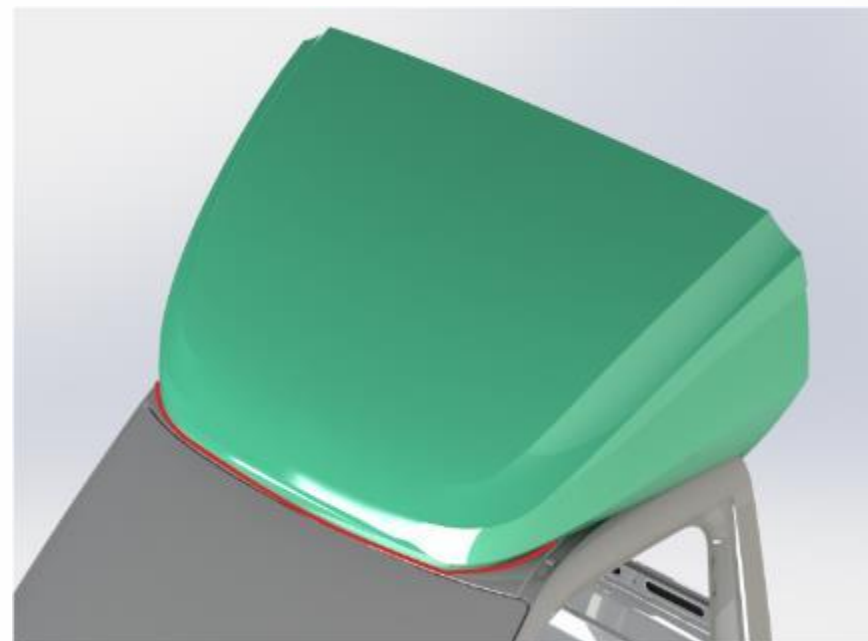
Painted steel (topcoat)



Sika® Aktivator 100



Sika® Primer-206 G+P
(Black)

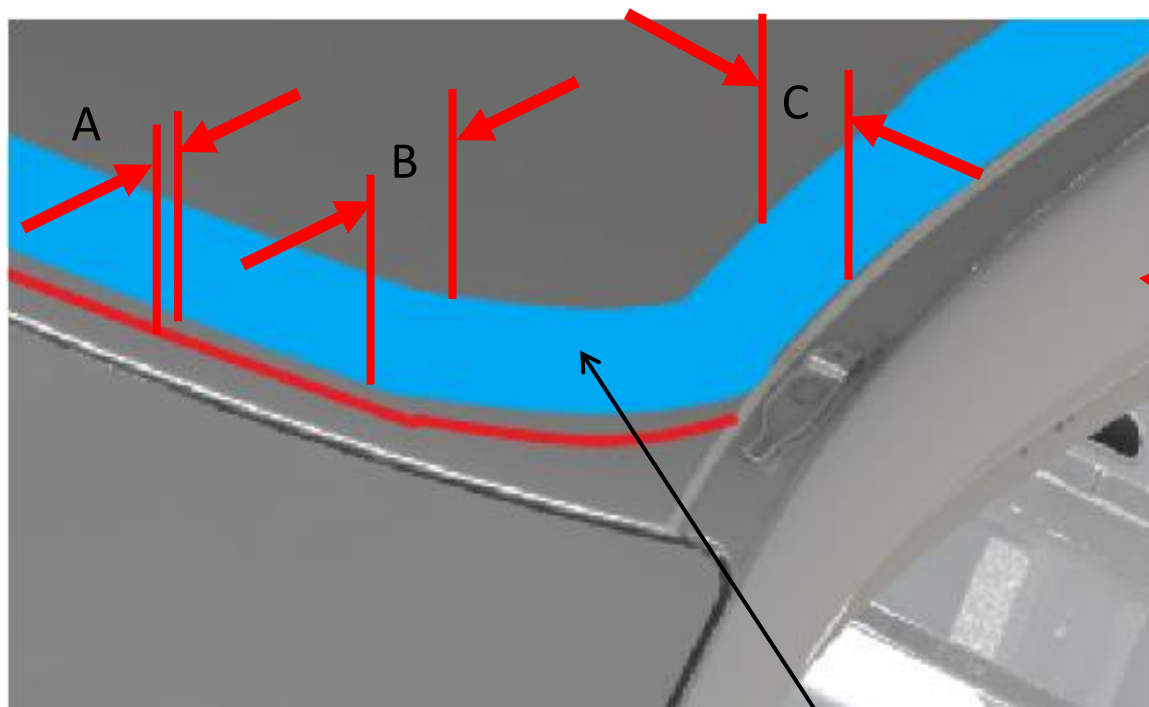


Place the Spoiler on the roof.
Draw with a carbon black pencil (Red line).
Remove the Spoiler.

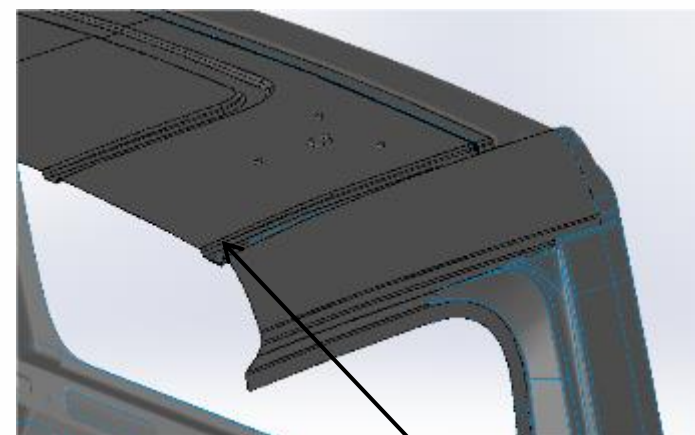
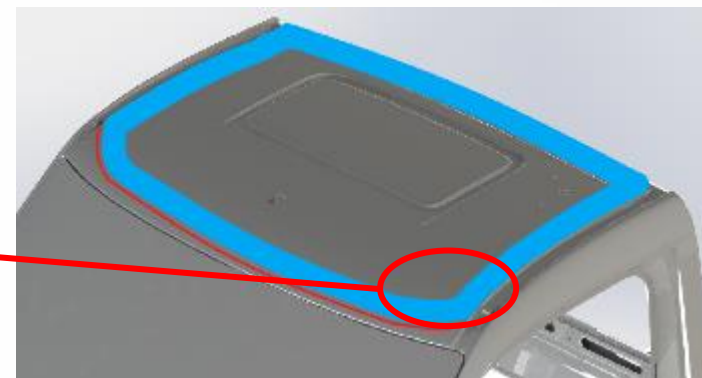


Be for use of these products,
check safety data sheets!!!!

Dimensions front edge roof vehicle



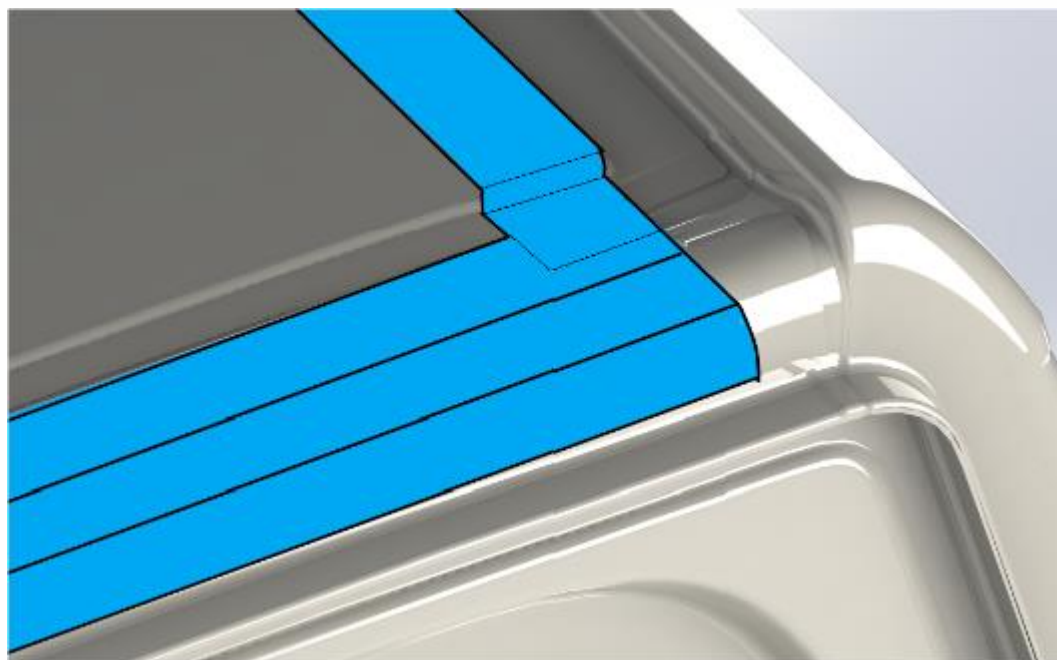
Glued surface



Edge

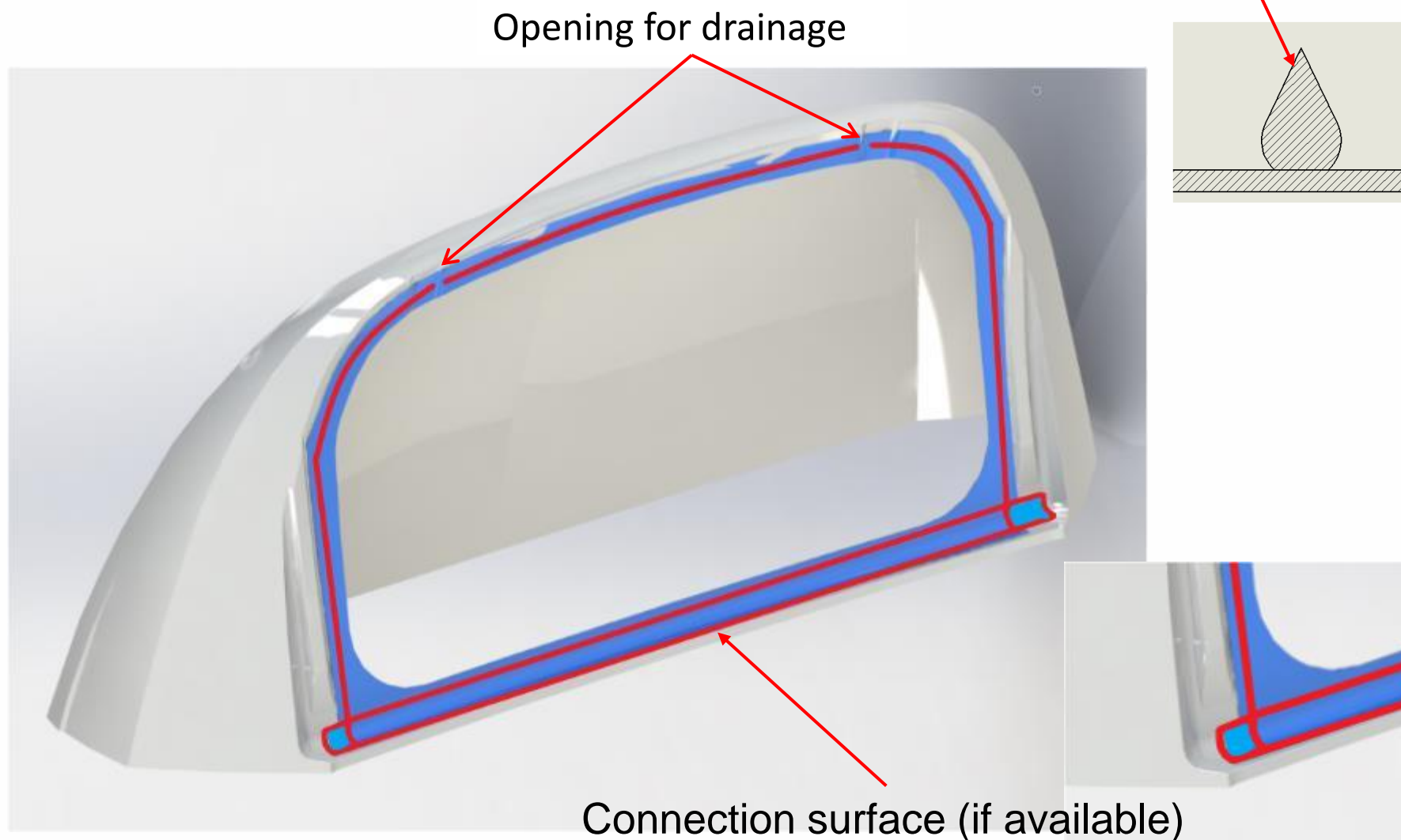
- A From carbon pencil line to glue surface (15 mm)
- B Width of the glue surface (60 mm)
- C Width of the glue surface measured from edge (60 mm)

Dimensions trailing edge roof vehicle (if connection surface available)

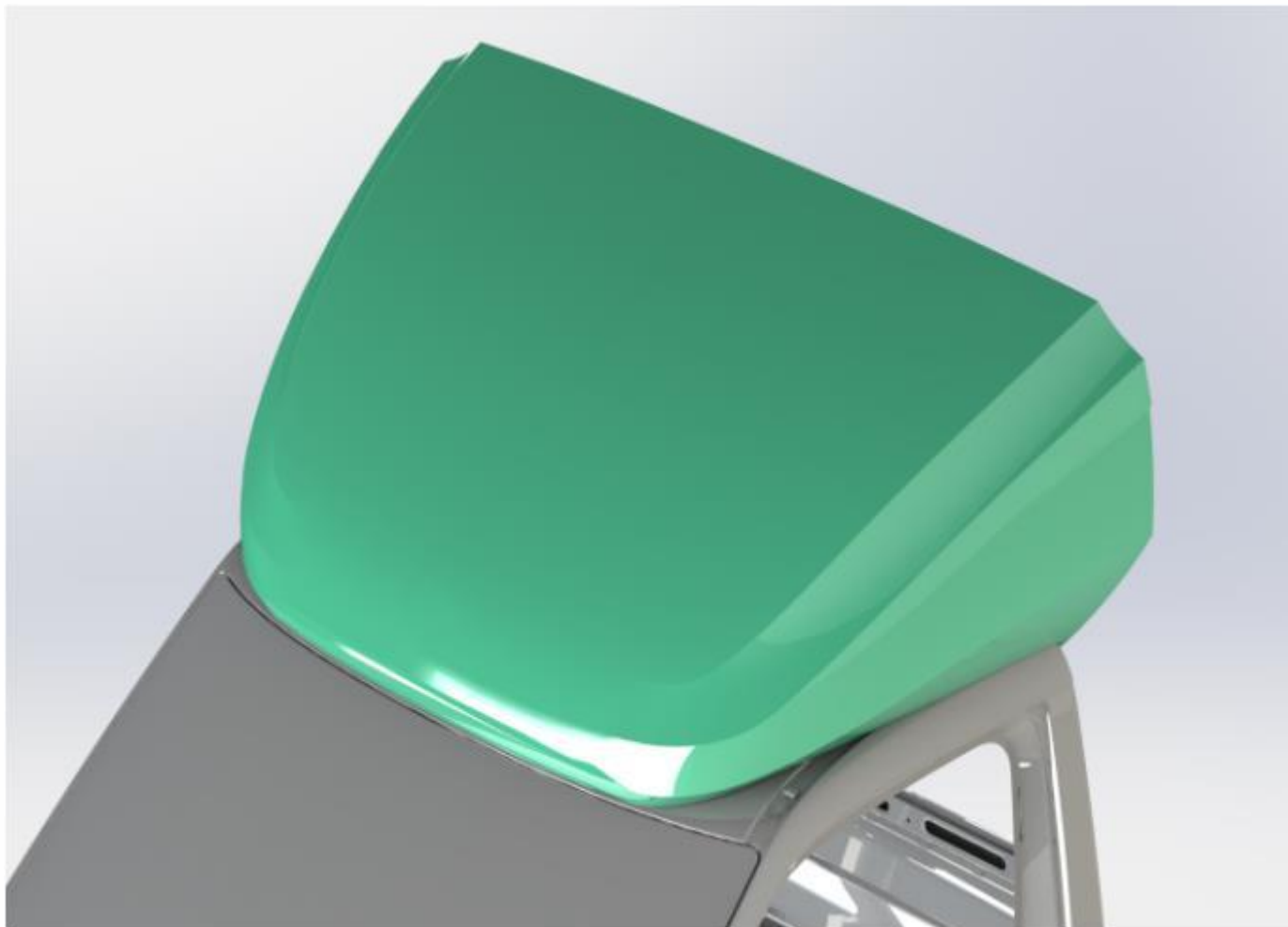


Apply glue (red color)

Sikaflex®-252
Red Line



Place the Spoiler on the Vehicle



- Place the spoiler on the roof of the vehicle
- Press down firmly
- Adhesive layer to dry for at least 24 hours